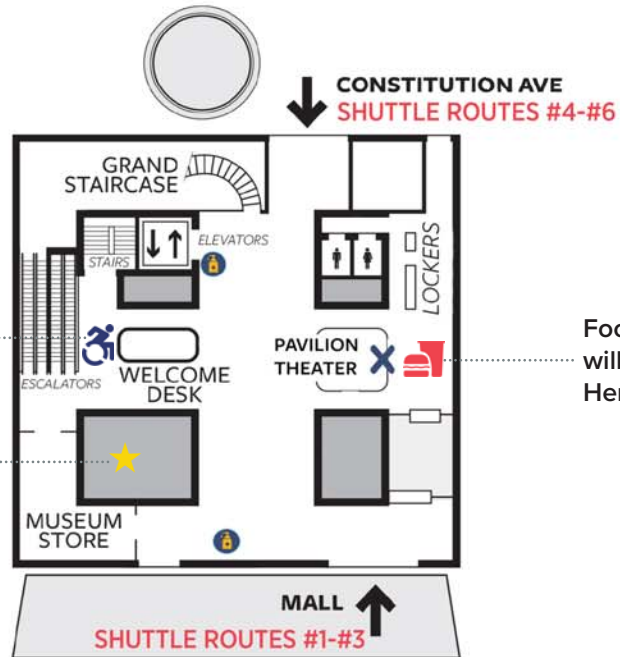


**L1 HERITAGE HALL**

For more information on accessibility resources please reference page 5

Make sure to check out the museum store!



Food and Beverage will be located in Heritage Hall

**C CONCOURSE**

Please check to make sure your badge has the icon below to ensure access to the museum.

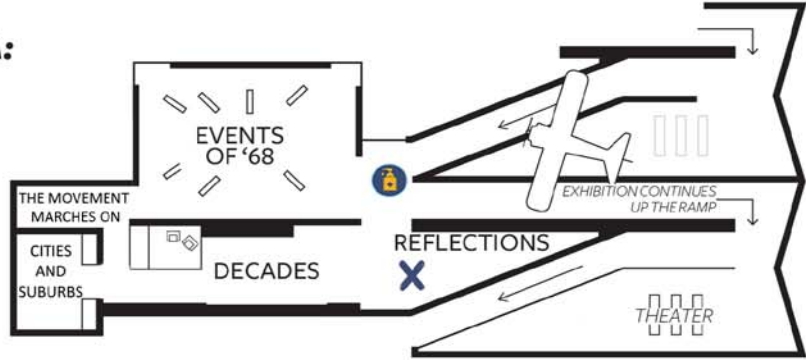


Food and Beverage will be located on this floor

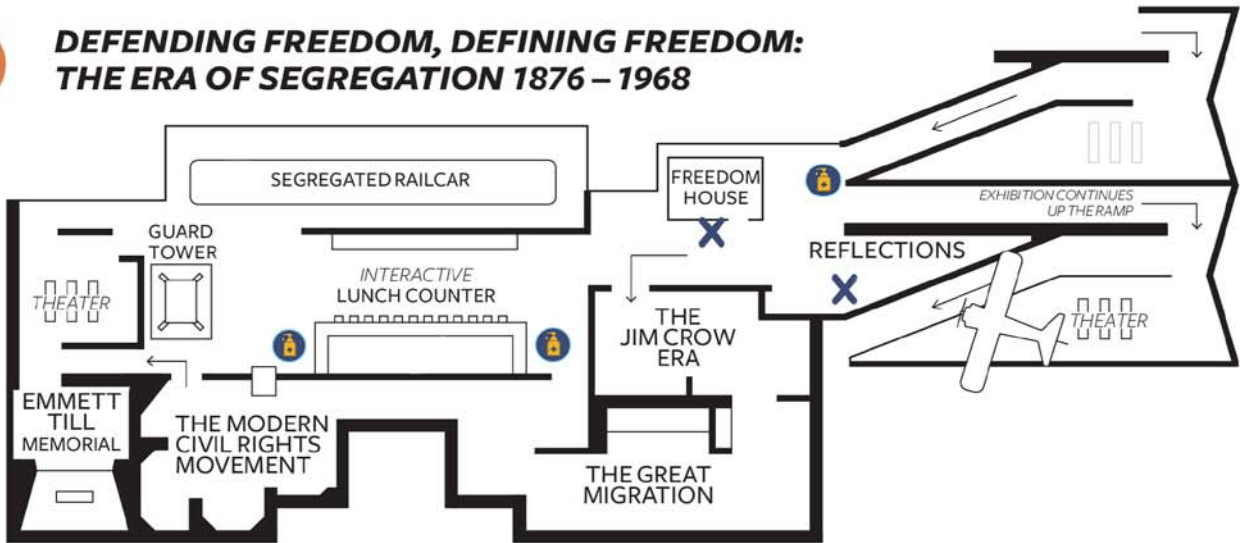
Kid friendly food will be available in the Sweet Home Café.  
Seating available  
Cash Bar

## C1 A CHANGING AMERICA: 1968 AND BEYOND

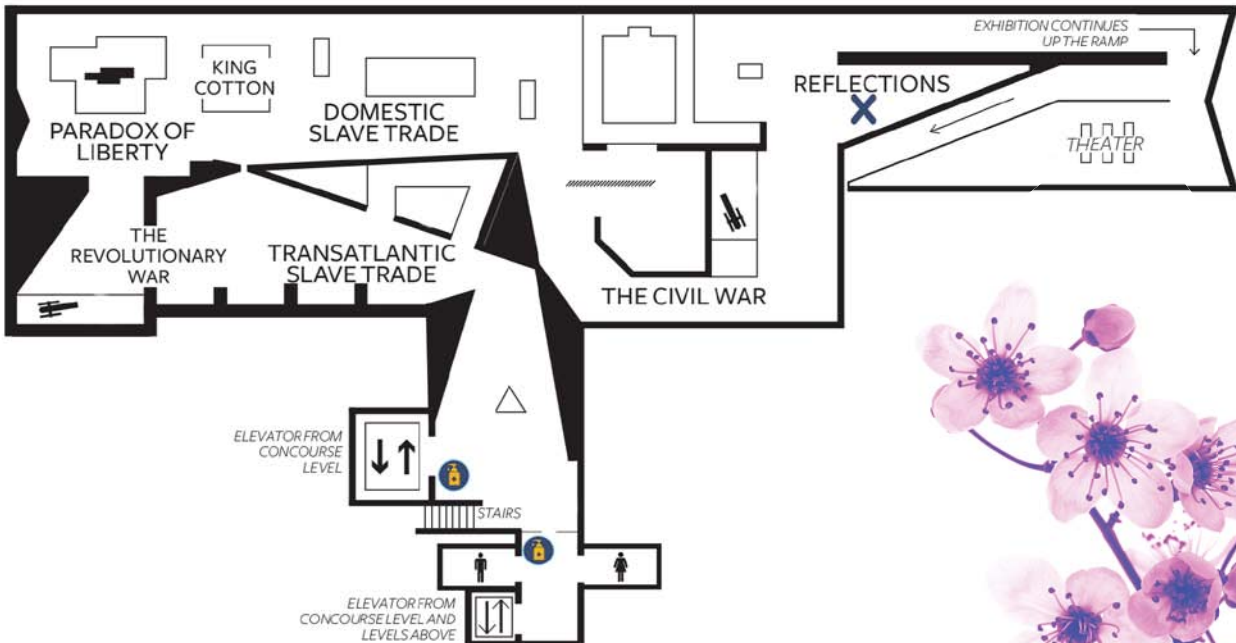
For attendees with limited mobility, it is recommended to start the History Galleries on the C1 level and end at the C3 level. Visitors may enter through the Gallerie's exit located on the Concourse level. The route presents a reverse chronological experience but some visitors may find it to be less fatiguing.



## C2 DEFENDING FREEDOM, DEFINING FREEDOM: THE ERA OF SEGREGATION 1876 – 1968



## C3 SLAVERY AND FREEDOM 1400 – 1877





SANITIZING STATIONS



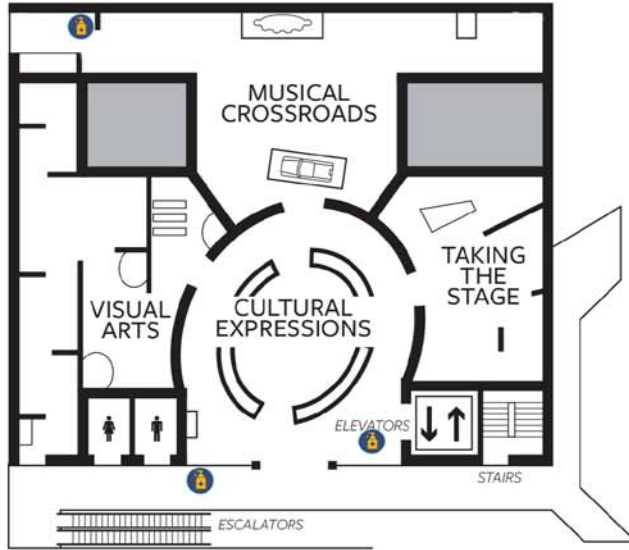
MODIFIED EXPERIENCE



CLOSED EXPERIENCE

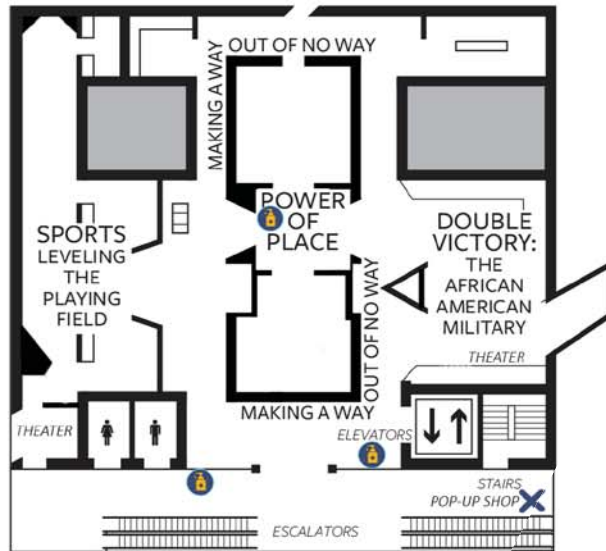
L4

## CULTURE GALLERIES



L3

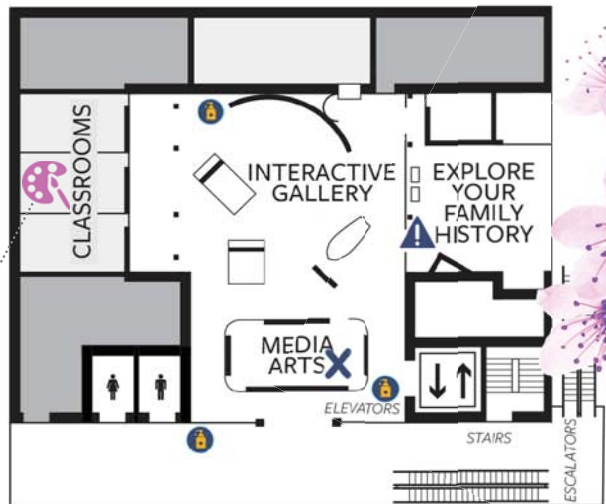
## COMMUNITY GALLERIES



L2


## EXPLORE MORE! INTERACTIVE GALLERY

Kids Arts & Crafts



## Shuttle and Transportation Information



 Shuttle service provided from all Routes starting at 6:30pm. Continuous service provided until 11:15pm. Last departure from the Museum back to hotels at 11:15pm.

### Hotels within close proximity of Washington Convention Center

Hotels listed below will be provided shuttle service for the DC Experience! night only. Guests to board buses on L Street of the Washington Convention Center starting at 6:30pm.

AC Hotel • Cambria Hotel • Conrad • Courtyard Convention Center • Eaton Hotel •  
Embassy Suites Convention Center • Hampton Inn Downtown • Henley Park •  
Homewood Suites Convention Center • Marriott Marquis (Co-HQ) • Morrison-Clark Historic Inn •  
Moxy • Westin Washington DC Downtown (formerly Renaissance Downtown) (Co-HQ) •  
Residence Inn Convention Center



## Museum Information

### Museum Security

All attendees and guests will be required to walk through a metal detector. Those unable to go through the metal detector will be hand-screened with an electronic wand by security personnel.

We encourage attendees to limit the number of personal belongings they bring to help speed up the security process.

#### Items Not Permitted in the Museum:

- Outside food or drink not properly closed or secured in a backpack
- Animals
- 3D weapons, guns, or knives, aerosol cans, including pepper spray and Mace, scissors or tools
- Banners, placards, or signs
- Monopods, tripods, or selfie sticks

### National Museum of African American History & Culture Accessibility Resources

#### Service Animals:

Service Animals as defined by the Department of Justice are permitted on the Museum grounds and in the building.

#### Restrooms:

Family/Companion Care Restrooms are located on Level 2, Level 3, and Level 4.

#### Limited Mobility Visitors:

- Both the Madison Drive and Constitution Ave entrances are accessible.
- The Museum is accessible for visitors with limited mobility via escalators, elevators, and ramps.
- Manual wheelchairs are available to borrow near the Madison Drive entrance or ask an AAP Staff Member.

#### Low Vision and Blind Visitors:

- For visitors who are blind or experience low vision, there are Braille/raised image maps and large print maps located at the Welcome Desk.
- The museum is a location for the Aira Access mobile information description service. Visitor's can download the free Aira app on a smartphone, connect to the museum's free Wi-Fi, and use the app to speak to an Aira agent.

#### Sensory Friendly Materials:

- If you are sensitive to noise, you may wish to bring noise cancelling headphones.
- Sensory Maps are available at the Welcome Desk. These maps showcase each exhibition level and highlight areas where sounds are loud, lights are bright, and where visitors can touch.

#### International Visitors:

Museum floor plan maps are available in Chinese, French, and Spanish at the Welcome Desk.

#### Resources for Families:

The Museum has a private lactation space available upon request. Please ask at the Welcome Desk or an AAP Staff Member.